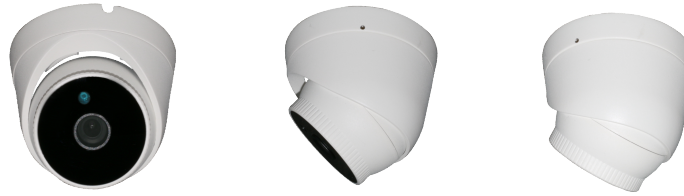


## Features:

- ◆ 3" Metal IR Dome Camera
- ◆ Obscured glass, hidden IR Led
- ◆ Water Resistance: IP65
- ◆ IR LED: 28μX3pcs, IR Range: 25M
- ◆ 24PCS Per Carton
- ◆ Size: φ107mm x 100mm
- ◆ Weight: 380g



## Specifications

Model ID	VD-IRB20FHD	VD-IRB20ZHD	VD-IRB20THD	VD-IRB50KHD	VD-IRB50SHD	VD-IRB80CHD	VD-IRB80VHD
Description	3" Metal IR Dome Camera, Obscured glass, hidden IR Led, IR LED: 28μX3pcs, IR Range: 25M						
TV System	NTSC / PAL						
Video Out	BNC 4 in 1(AHD, TVI, CVI, CVBS )						
	Main menu Switch TVI/CVI/AHD/CVBS output / OSD Switch TVI/CVI/AHD/CVBS output						
Chipset Solution	1/2.7" 1080P 2MP CMOS Sensor, low illum F37 + XM330	1/2.7" 1080P 2MP CMOS Sensor Low illum F33 + FH8536E	1/2.8" 1080P 2MP STARVIS CMOS Sensor, Low illum SONY IMX307 + NVP2441H	1/2.7" 5MP CMOS Sensor Low illum Silicon K05 + FH8538M	1/2.9" 5MP CMOS Sensor Low illumination SONY IMX335 + FH8558M	1/2.5" 4K(8MP) CMOS Sensor Low illum C08 + FH8556	1/2.3" 4K(8MP) CMOS Sensor Low illum OV12895 + NVP2481
Resolution	1080P@ 25fps(PAL), 30fps(NTSC)	1080P@ 25fps(PAL), 30fps(NTSC)	1080P@ 25fps(PAL), 30fps(NTSC)	5MP @ 25fps(PAL), 30fps(NTSC)	5MP @ 25fps(PAL), 30fps(NTSC)	4K(8MP) @ 15fps(PAL), 15fps(NTSC)	4K(8MP) @ 15fps(PAL), 15fps(NTSC)
Effective Pixels	1920(H)×1080(V)	1920(H)×1080(V)	1920(H)×1080(V)	2592(H)×1944(V)	2592(H)×1944(V)	3840(H)×2160(V)	3840(H)×2160(V)
Minimum Illumination	0.001Lux						
Lens	3.6mm Board Lens(2.8/6/8mm Optional)					F1.0 4mm 4K Lens	
Sync, System	Internal Synchronization						
Scanning System	2:1 Interface						
Shutter Speed	1/60~1/100,000sec (N), 1/50~1/100,000sec (P)						
S/N Ratio	≥ 58dB						
DWDR	NO	YES	YES	YES	YES	YES	YES
DNR	NO	YES(3D-NR)	YES(3D-NR)	YES(3D-NR)	YES(3D-NR)	YES(3D-NR)	YES(3D-NR)
OSD	NO	Optional	Yes	Yes	Yes	Yes	Yes
UTC	YES	YES	NO	Yes	Yes	Yes	Yes
Power Source	DC12V ±10%						
Consumption	<5W						
Operating Environment	-20℃~60℃ / 10% ~ 95%RH						
Working Humidity	≤90%						
Size(mm)	φ107mm x 100mm						
Weight(kg)	0.38 kg						